

# AgileView

EMS(Environmental Monitoring System)

> > Foundation of Digital Future

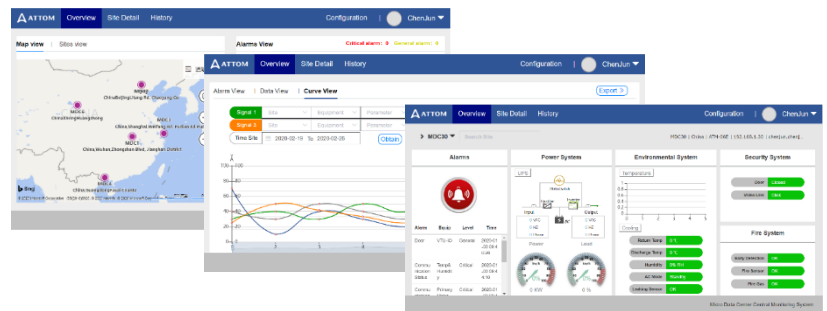


Customized Efficiency

# AgileView | EMS

## Powerful Support for Your Comprehensive Management Needs.

The increasingly accelerated digital demands are propelling the rapid evolution of IT infrastructure, prompting the need for monitoring and managing a more complex and evolving data center infrastructure. AgileView Solution interfaces with critical facilities using a full range of sensors, ensuring real-time monitoring and providing instant alerts. This facilitates prompt responses from data center managers. Additionally, it seamlessly integrates with your BMS for remote management and monitoring. This solution empowers organizations to operate a flexible, well-balanced, optimized, and efficient data center.



### Centralized Monitoring Center

NorthBound Integration

SNMP / Modbus / BacNet



Web  
Browser



Email



SMS



Phone



Precision  
Cooling



Temp&Hum.  
Sensor



Leaking  
Sensor



Emergent  
Ventilation

Micro Environment System



UPS



Power  
Meter



Battery

Power Supply System



Smoke  
Sensor



Door  
Sensor



Alarm  
Beacon



Video  
Surveillance

Security System

Efficiency Prefabricated



## Rack/Wall Mount, Monitoring Host w/o Display EM099



### Key Features:

- All in one design 1U height supporting all types of equipment, such as UPS, cooling, smoke, water etc.
- Supports multiple protocols type from equipment, such as Modbus-RTU, Modbus-TCP, SNMP.
- Open to be integrated into central BMS by SNMP or Modbus-TCP.
- Open to integrate any third party critical systems, such as UPS, Genset, Cooling, etc.
- Built in HDMI port to connect with external display.
- Seamless integration of Attom Video and Access Control systems.

## Rack/Wall Mount, Monitoring Host w/o Display EM099



### Technical Data

INPUT	
Voltage	12VDC~24VDC
Current	3.0A
PARAMETERS	
Display Panel	External touch display
Web Portal	Built in
Monitoring Ports for BMS	Modbus-TCP, SNMP
I/O PORTS	
RS232	1* RS232
RS485	5* RS485
Digital Input	6* DI
Digital Output	2* DO
HDMI	1* HDMI
Network	1* 10/100M
USB	1* USB2.0
OPERATING ENVIRONMENT	
Operating Temperature	-40°C~85°C
Operating Humidity	5%~95%RH, Non-Condensing
PHYSICAL	
Dimension	481*244*44.5mm
Net Weight	3.4kg

Efficiency Prefabricated

## Door Mount, Monitoring Host with Display EM100



### Key Features:

- All in one design supporting all types of equipment, such as UPS, cooling, smoke, water etc.
- Supports multiple protocols type from equipment, such as Modbus-RTU, Modbus-TCP, SNMP.
- Open to be integrated into central BMS by SNMP or Modbus-TCP.
- Open to integrate any third party critical systems, such as UPS, Genset, Cooling, etc.
- Built in 10-inch touch display for easier onsite control and view.
- Seamless integration of Attom Video and Access Control systems.

## Door Mount, Monitoring Host with Display EM100



### Technical Data

#### INPUT

Voltage	12VDC~24VDC
Current	3.0A

#### PARAMETERS

Display Panel	Built in 10.1inch color display Capacitive type, multiple touch supported
Web Portal	Built in
Monitoring Ports for BMS	Modbus-TCP, SNMP

#### IO PORTS

RS232	1* RS232
RS485	5* RS485
Digital Input	6* DI
Digital Output	2* DO
Network	1* 10/100M
Camera	1* 2.0M Pixels
USB	1* USB2.0

#### OPERATING ENVIRONMENT

Operating Temperature	-25°C~55°C
Operating Humidity	5%~95%RH, Non-Condensing

#### PHYSICAL

Dimension	286*196*33mm
Net Weight	2.0kg

## Temperature and Humidity Sensor M-S-TH

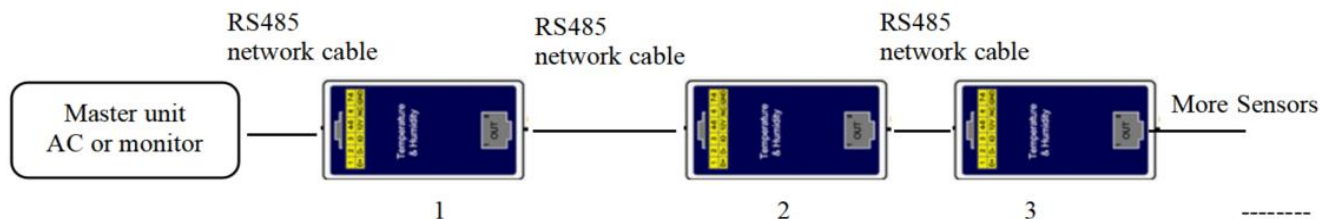
This cabinet-style temperature and humidity sensor employs semiconductor sensor design, offering high precision, cost-effectiveness, and self-calibration function. It can be widely utilized for temperature and humidity monitoring in environments such as data centers, smart cabinets, IDC rooms, and laboratories, while enabling intelligent management by connecting to data center monitoring systems.



### Key Features:

- High accuracy, self-correction, and consistency.
- RJ45 connection for automatic address allocation.
- Easy installation with magnets or wall mount.
- RS485 interface with Modbus protocol for remote monitoring
- Option to select temperature units (°C or °F).
- Modular design for easy installation and maintenance.

## Temperature and Humidity Sensor M-S-TH



### Technical Data

#### INPUT

Power	10-15VDC, rated 12VDC
-------	-----------------------

#### MEASURING RANGE

Temperature Range	-20°C~80°C
-------------------	------------

Humidity Range	0%~100%RH
----------------	-----------

#### MEASUREMENT ACCURACY

Temperature Accuracy	<± 0.3°C, tested at 25°C.
----------------------	---------------------------

Humidity Accuracy	<±3% RH, tested at 25°C
-------------------	-------------------------

#### COMMUNICATION INTERFACE

Physical interface	RS485
--------------------	-------

Tandem Nodes	Recommended 64 nodes (Max. 256 nodes)
--------------	---------------------------------------

Transmission distance	1200m(connect with STP network cable)
-----------------------	---------------------------------------

Address Range	1~254, through RS485 setting, can realize automatic allocation.
---------------	---

Communication protocol	Modbus-RTU
------------------------	------------

Baud rate	Default setting 9600bps. 2400/4800/9600 can be selected.
-----------	--

#### OPERATING ENVIRONMENT

Operating Temperature	-20°C~80°C
-----------------------	------------

Operating Humidity	0%~100%RH
--------------------	-----------

#### PHYSICAL

Dimension	80*48*23mm
-----------	------------

Net Weight	0.05kg
------------	--------



## Smoke Sensor M-S-SF

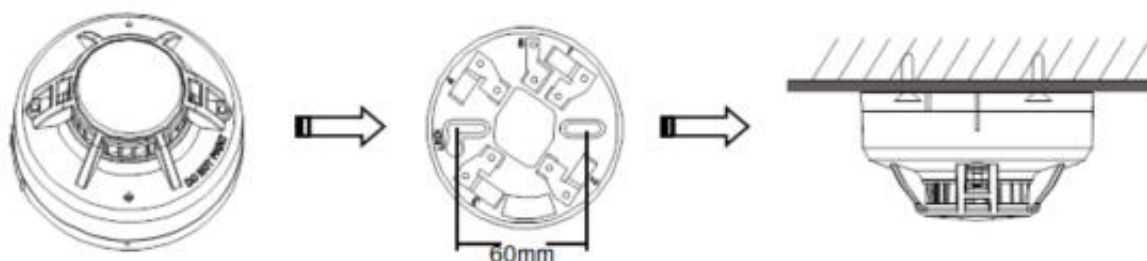
The smoke sensor works with two-wire connections, compatible with traditional systems. It monitors smoke levels, showing a red light during monitoring with low power use. In an alarm state, when smoke exceeds the threshold, the red light stays on, and current rises quickly.



### Key Features:

- The detector features an automatic dust accumulation compensation function, which reduces the impact of dust on the detector's sensitivity.
- The alarm can be reset only by a momentary power interruption.

## Smoke Sensor M-S-SF



### Technical Data

#### INPUT

Voltage 9VDC~28VDC, Non-polarized

#### PARAMETERS

Standby Current 60uA @ 24 VDC

Max. Alarm Current 30mA @ 24 VDC(LED on )

Adjustable Sensitivity 0.15~0.3dB/m

#### OPERATING ENVIRONMENT

Operating Temperature 10°C~50°C

Operating Humidity 10%~93%RH, Non-condensing.

#### PHYSICAL

Dimension  $\Phi$ 103\*55mm (installed in Base)

Net Weight 0.155kg

## Leaking Sensor M-S-WD

M-S-WD is a water leakage detection solution designed for small data centers, laboratories, base stations, and other small-scale areas where leak detection is required. It features fast real-time response, high cost-effectiveness, and easy installation.



Detection controller



Detection cable

### Key Features:

- The controller provides DC/DC power isolation to prevent interference from power ground lines, ensuring high stability.
- The detection lines are flame-resistant, dustproof, and short-circuit-resistant, ensuring no false alarms.

## Leaking Sensor M-S-WD



### Technical Data

#### Detection controller

##### INPUT

Voltage	12VDC, 10~15VDC
Working Current	≤0.1A

##### PARAMETERS

Detection Sensitivity	8 kinds of sensitivity can be set
Response Time	<2s
Relay Output	1 way, contact DC30V 1A

##### PHYSICAL

Dimension	88*37*59 mm
Net Weight	0.07kg

#### Detection Cable

##### MATERIAL

Cable Material	Imported conductive polymer and insulation polymer, flame retardant materials
Protection	Built-in dustproof, anti-short circuit protective net
Flame Retardant Grade	94V-0

##### FEATURES

Detection Medium	normal water, air conditioning water, fire water, rainwater, etc.
Sensitivity	<3cm water leakage line can be sensed
Response Time	<1s
Installation Method	Non-Position
Drying Time	15 seconds after the cable leaves the water, gently shake the cable water droplets automatically fall off
Cleaning Method	Wipe off with a clean cloth
Life	10 years

##### OPERATING ENVIRONMENT

Operating Temp.	-10°C~50°C
Operating Humidity	10%~90%RH

##### PHYSICAL

Dimension	5.5mm <sup>2</sup>
Cable Length	5meters
Net Weight	0.35kg

Efficiency Prefabricated

## Door Status Sensor M-S-DS

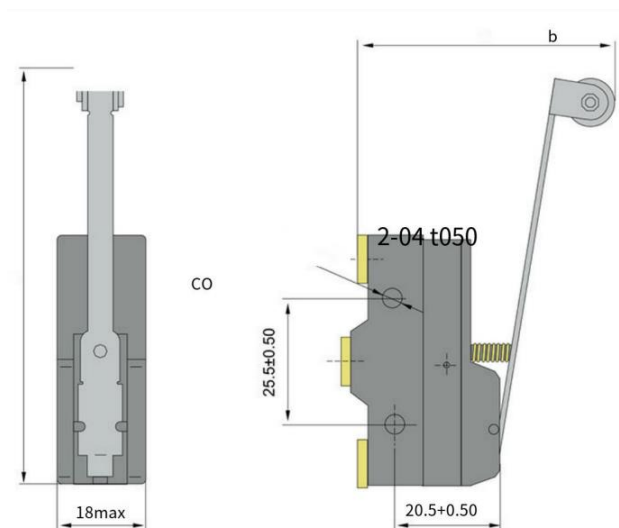
Used for stroke control, protection and interlocking of mechanical equipment such as machinery, textiles and electronic instruments.



### Key Features:

- Due to their mechanical nature, limit switch sensors are typically highly reliable and easy to maintain.
- sensors often have a long lifespan and can work in harsh environments.

## Door Status Sensor M-S-DS



### Technical Data

Operation Form | Hinged roller long lever type

#### ELECTRICAL PARAMETERS

Isolation Voltage | 380V

Voltage | AC 380V, DC 220V

Electric Current | 3A

#### MECHANICAL PARAMETERS

Action Force | 0.35~0.85N

Action stroke | ≤3

Repetition Precision | ±0.05mm

Protection Grades | IP62

## Infrared Ray Detection sensor M-S-IR

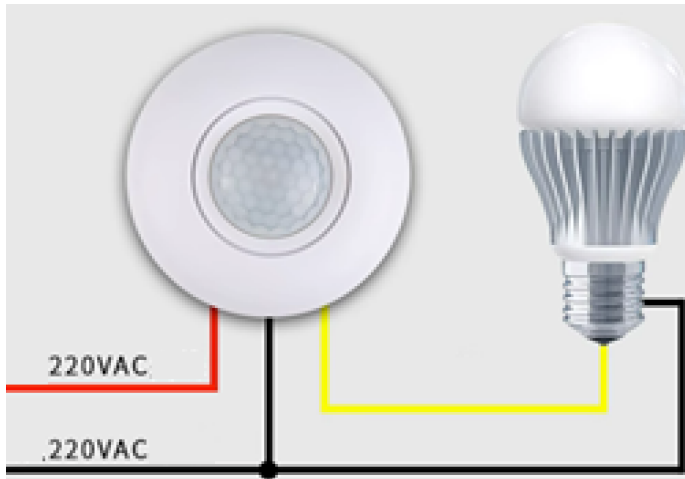
When a person approaches, the light turns on, and when the person leaves, there is a delay before the light turns off. It features user-friendly, convenient, safe, and energy-saving.



### Key Features:

- 360-degree sensing angle
- Adjustable photosensitive function
- Adjustable delay time
- Compatible with various types of lamps

## Infrared Ray Detection sensor M-S-IR



### Technical Data

#### INPUT

Power	185VAC-245VAC
-------	---------------

#### PARAMETERS

Delay Time	Adjustable 16s – 360s
Light Control	Adjustable 5-500LUX
Action Type	Human Infrared motion
Power	≤1000W
Sensing Angles	Ceiling 360 degrees, wall 120 degrees.

#### INSTALLATION

Max. Installation Height	Ceiling 3 meters, wall 1.5 meters.
--------------------------	------------------------------------

#### OPERATING ENVIRONMENT

Operating Temperature	-0°C~40°C
Operating Humidity	10%~90%RH

#### PHYSICAL

Dimension	Φ68mm
Net Weight	0.25kg



## Industrial Touch Display 10" 21" 43"



### Key Features:

- Suitable for 1U type host.
- 10-point capacitive touch for fast 5ms response, precise and stable.
- Durable aluminum alloy frame and sheet metal rear shell, corrosion-resistant.
- Boasting an IP65 waterproof surface, ensuring durability in challenging environments.
- Rigorous tests guarantee consistent quality in every machine.

## Industrial Touch Display

### 10" 21" 43"



Technical Data			
Model	M-H-STA	TD215-E10-A01	TD435-E10-A01
<b>TOUCH SCREEN PARAMETERS</b>			
Screen Type	LED capacitive touch screen	LED capacitive touch screen	LED capacitive touch screen
IP Rated	Front IP65 Whole Body IPX3	Front IP65 Whole Body IPX3	Front IP65 Whole Body IPX3
Size	10.1" (16:10)	21.5" (16:9)	43" (16:9)
Display Area	218 *136.5mm	477.6*269.1mm	944.1*532.3mm
Optimal Resolution	Default 1280 * 800P (Optional 1920* 1200P)	1920 * 1080P	Default 1920 * 1080P (Optional 3480* 2160P)
Brightness	≥250cd/m <sup>2</sup>	≥250cd/m <sup>2</sup>	≥300cd/m <sup>2</sup>
Contrast	≥ 1000 : 1	≥ 3000 : 1	≥ 1200 : 1
Touch Response Time	< 5ms	< 5ms	< 5ms
Touch Points	10-point touch	10-point touch	10-point touch
Visual angle	Full view 85°	Full view 85°	Full view 85°
Communication Mode	Full speed USB 2.0	Full speed USB 2.0	Full speed USB 2.0
Drive	Drive-free, plug-and-play	Drive-free, plug-and-play	Drive-free, plug-and-play
<b>ELECTRICAL PROPERTIES</b>			
Input Power	110-240VAC 50/60Hz	110-240VAC 50/60Hz	110-240VAC 50/60Hz
Output power	DC 12V 3A	DC 12V 5A	DC 12V 3A
<b>I/O PORTS</b>			
3.5mm Audio	1*3.5mm Audio	1*3.5mm Audio	1*3.5mm Audio
VGA	1*VGA (15-pin D-Sub)	1*VGA (15-pin D-Sub)	1*VGA (15-pin D-Sub)
VDI	N/A	1*VDI	1*VDI
HDMI	1*HDMI	1*HDMI	1*HDMI
USB2.0	1*USB2.0	1*USB2.0	1*USB2.0
<b>OPERATING ENVIRONMENT</b>			
Operating Temperature	0°C~50°C	0°C~50°C	0°C~50°C
Operating Humidity	10%-80%RH	10%-80%RH	10%-80%RH
Operating Altitude	Below 5000m	Below 5000m	Below 5000m
<b>PHYSICAL</b>			
Dimension	255*175*31.5mm	518*314*40.2mm	985*573*51.9mmNet
Net Weight	0.9 kg	4.9 kg	17.6kg

We believe the world is  
being totally connected.

The connections are  
creating digital intelligence  
and a better future.

We design and deliver  
data center  
infrastructure products  
to build foundation of  
digital future.

USA



1450 NE Alex Way APT 299  
Hillsboro, OR 97124, USA  
+1 301 6789 288

CHINA



F101, 06 Yangchong Road,  
Shenzhen, 518018, China  
+86 755 2320 7298

Contact us

ATTOM TECHNOLOGY



Visit us on web  
<https://atom.tech>



Email us  
[support@attom.tech](mailto:support@attom.tech)

