

# AgileHub™

## Shelter Modular Data Center Solution

>> Foundation of Digital Future



**ATOM**

Efficiency Prefabricated

# AgileHub™ | Shelter Data Center Solutions

## We Optimize Every Aspects of Outdoor Shelter DC Designs.

As one of the pioneer in modular data center, we follow the trends of the digital future with full attention to the challenges faced by Telecom operators and data center managers, we are dedicated to exploring innovative solutions to provide more energy efficient, economical and flexible configurations, and better match to your current and future needs.



### Solution Benefits

#### Flexibility

- 24U to 42U cabinet with IP65 protected space with all kinds of critical aspects, access control and video monitoring options.
- Compact outdoor cabinet with built-in standard 19" frame, match for most types IT equipment's installation.
- Support multiple power system with 48VDC rectifier and AC UPS.

#### Optimized Efficiency

- Better cooling efficiency with wall/rack/inrow cooling system.
- Separated cold/hot air management enhance more energy efficiency.
- High efficient components including inverter compressors, EC fans and green refrigerant.

#### Rapid Deployment

- Rugged designs suitable for all environments and applications. Outdoors, rooftops, warehouses, oil rigs, remote sites, can provision in any location with no pre-investment.
- All-in-one design, factory prefab and commissioning enable fast deployment.

#### Standardized Management

- Simplify the management with the standardized modules and remote monitoring & management portals.



Efficiency Prefabricated



# AgileHub™ | Shelter Data Center Solutions

## Various Predefined Cabinet, Fulfill Your Applications.

AgileHub solution includes a variety of predefined configurations with multiple options for key components such as cabinets, air conditioning, power systems, monitoring system, access control, fire protection, etc. to meet your various application needs.

### Outdoor Cabinet for Telecom Applications

- 24U to 42U IP65 water/dust protection prefabricated cabinet with built-in standard 19" frame.
- Fan ventilation kit and wall mount cooling for optional.
- Sandwich type steel front&rear door with thermal insulation.
- Optional wall mount / floor mount installation method.
- Operating temperature: -40°C~55°C.



### Outdoor Cabinet for Modular Data Center

- Multiple 1\*42U/2\*42U/3\*42U IP65 water/dust protection prefabricated cabinet with condenser space and rugged support frame.
- Sandwich type steel front&rear door with thermal insulation.
- Maintenance access on front and back.
- Operating temperature: -40°C~55°C.

Efficiency Prefabricated



# AgileHub™ | Shelter Data Center Solutions

## Adaptable Power Solutions, Ensure Safety at All Moments.

Standard modular design components easy to be integrated into compact cabinets saving space and reducing complexity. Provide efficient, reliable and flexible power protection.



### 48VDC Power System

- Standard 19" rack mount design.
- Rectifier module / Solar module for options.
- adopts hot swap technology for Plug and Play installation.
- Optional EPS Inverter power module, support AC power input equipment.
- High temperature working up to 75C.
- Equipped with high performance Lithium-iron battery, provide reliable protection.
- Support remote monitoring with multi-channel serial port, dry contact, and network interface output.

### UPS AC Power System

- High frequency UPS module rack mount in modular particle easy expansion and high MTBF.
- Highly scalable online dual-conversion product with dual DSP technology ensure high ease of use and reliability.
- Support multiple voltage specifications: 220-240/380-415V
- Intelligent battery management features to extend battery life.
- Powerful network management function, SNMP+USB+RS232 multiple communications, support remote monitoring.
- 3-600KVA wide range of specifications, suitable for different scale applications.



### AgileLi Battery System

- UPS type and 48V Telecom type for optional.
- UPS type battery module no need complex protocol coupling, plug and play.
- Safety by full protection including over-current, over-charge, over-discharge and short-circuit, etc.
- Standard 19" rack mount compact size, easy to installation and integration.
- Intelligent BMS system for reliable working, alarm, reporting, and remote monitoring.

Efficiency Prefabricated



# AgileHub™ | Shelter Data Center Solutions

## Optimized Efficiency with Various Precision Configuration.

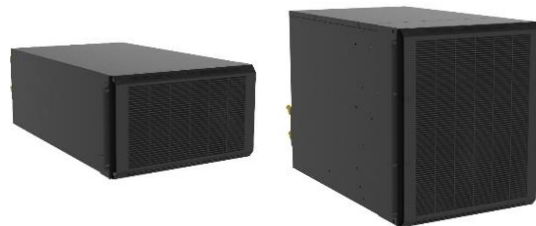


### Cooling System for Telecom

- 48VDC and 208-240VAC input power type for optional.
- IP65 protection rated in package wall mount design, no occupying of U space.
- Powder coated sheet metal endures harsh environment
- Green refrigerant is highly efficient and no ODP.
- Special design working upto -40C~55C.

### Cooling System for MDC

- Precision cooling system with minimal energy consumption by high efficient EC fan, inverter compressor, EEV and smart controller system.
- CFD optimized cold/hot air management system design to match airflow precisely.
- Optional with indirect free cooling options to furtherly lower down data center PUE.
- Prefabricated and pre-tested system to deliver designed efficiency with minimum onsite installation and commission jobs.
- Special design working upto -40C~55C.

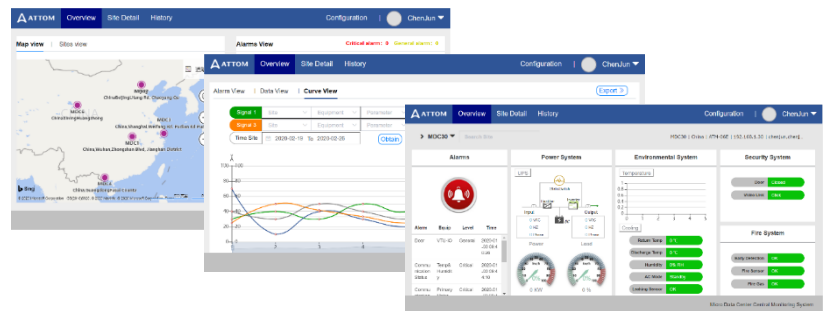


Efficiency Prefabricated

# AgileHub™ | Shelter Data Center Solutions

## Comprehensive Monitoring, Support Your Smarter Decisions.

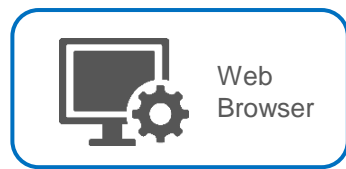
Smart DCIM System communicates with all key aspects through a full range of sensors to monitor the status of the infrastructure. Real-time alerts and notifications allow operators to proactively identify and address any issues promptly. Intelligent monitoring platform open to integrated with your BMS system, achieve remote centralized manage and monitoring, Help organizations effectively manage and monitor their infrastructure, ensuring optimal performance, resource utilization, and security.



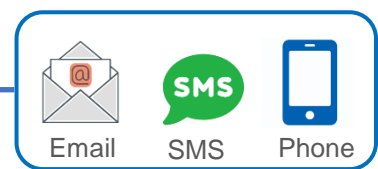
### Centralized Monitoring Center

NorthBound Integration

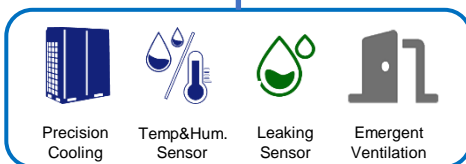
SNMP / Modbus / BacNet



Web  
Browser

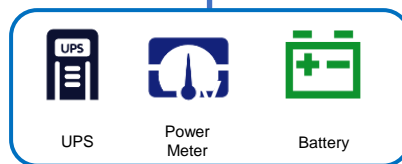


Email SMS Phone



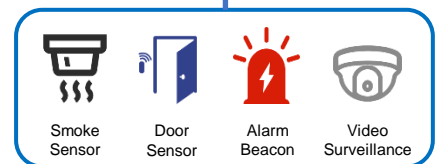
Precision Cooling Temp&Hum. Sensor Leaking Sensor Emergent Ventilation

Micro Environment System



UPS Power Meter Battery

Power Supply System



Smoke Sensor Door Sensor Alarm Beacon Video Surveillance

Security System

Efficiency Prefabricated



# AgileHub™ | Shelter Data Center Solutions

## Multiple Types of Configuration, Suitable for All Your Needs.

AgileHub solution includes a variety of predefined configurations with multiple options for key components such as cabinets, air conditioning, power systems, monitoring system, access control, fire protection, etc. to meet your various application needs.



### Precision Cooling

- 0.6-3.0kW wall mount cooling options
- 3.9-12.8kW rack mount cooling options
- 5.6-90kW Inrow cooling options



### Rack / Modular UPS

- 3-60kVA rack UPS as standard design
- 60-200kVA modular UPS rack mount
- 250-600kVA modular UPS floor mount



### 48VDC Rectifier

- 60-1200A 48VDC rectifier.
- 30A/50A Rectifier module / 50A Solar module options.
- 3kW/4kW/5kW Inverter EPS power system options.



### DCIM System

- Full communication to UPS, cooling, power panel, and all type of sensors.
- Integration with access control system.
- Rotation bracket mount host, do not occupy U space.
- Remote accessible from web, SMS, Email, Modbus-TCP. Optional with SNMP.



### Lithium/VRLA Batteries

- 48V 50AH/100AH/200AH lithium battery for Rectifier.
- 25AH/100AH/200AH UPS type lithium batter pack options.
- 12V 7AH-200AH VRLA battery options.

### Additional Options



Video Surveillance System



Rack mount fire System



Early Fire Detection System

Efficiency Prefabricated



# AgileHub™ | Shelter Data Center Solutions

Pre-defined standard module, Simplify your application design.



## 1-Rack MDC with Wall Cooling

- 1\* 42U Total Space
- 1\* 1.5kW Wall Packaged Cooling
- 2\* 30A 48VDC Power
- IP65 Cabinet
- RFID Access Control
- Local DCIM



## Dual Rack MDC with Wall Cooling

- 2\* 42U Total Space
- 2\* 1.5kW Wall Packaged Cooling
- 2\* 30A 48VDC Power
- IP65 Cabinet
- RFID Access Control
- Local DCIM



## 1-Rack MDC with Rack Cooling

- 1\* 42U Total Space
- 1\* 3.9kW Rack Split Cooling
- 1\* 6kVA UPS Power
- IP65 Cabinet
- RFID Access Control
- Local DCIM



## 2-Rack MDC with Rack Cooling

- 2\* 42U Total Space
- 1\* 5.9kW Rack Split Cooling
- 1\* 10kVA UPS Power
- IP65 Cabinet
- RFID Access Control
- Local DCIM



## 3-Rack MDC with Inrow Cooling

- 3\* 42U Total Space
- 1\* 7.6kW Row Split Cooling
- 1\* 10kVA UPS Power
- IP65 Cabinet
- RFID Access Control
- Local DCIM



## 3-Rack MDC with Rack Cooling

- 3\* 42U Total Space
- 1\* 12.8kW Rack Split Cooling
- 1\* 20kVA UPS Power
- IP65 Cabinet
- RFID Access Control
- Local DCIM

Efficiency Prefabricated





# Technical Data | IEC Power – 380-415/3P/50~60Hz

Product Model	ATM-03-H01W	ATM-06-H02W	ATM-06-H01K	ATM-10-H02K	ATM-10-H02R	ATM-20-H03K	Customized
Available Space for IT -U	33U	71U	27U	67U	73U	101U	<= 3 *42U
Available Power for IT -kW	1.3	2.5	3.5	5.0	7.0	12.0	Per Definition
Redundancy	N	N	N	N	N	N	N / N+1 / 2N
Width -mm	905	1810	1400	2000	2600	2600	<= 2600
Depth -mm	1080	1080	1600	1600	1600	1600	1600
Height -mm	2105	2105	2300	2300	2300	2300	2300
Weight -kg	165	345	560	890	1160	1242	Per Definition
IP Level	IP65	IP65	IP65	IP65	IP65	IP65	IP65
Input Power	220-240V/1P/50Hz	220-240V/1P/50Hz	220-240V/1P/50Hz	220-240V/1P/50Hz	220-240V/1P/50Hz	380-415V/3P/50Hz	Per Definition
Recommended Breaker	32A 1P	63A 1P	63A 1P	63A 1P	63A 1P	63A 3P	Per Definition
<b>Power Section</b>							
UPS -kVA	Optional	Optional	6.0	10.0	10.0	20.0	3 - 200kVA
UPS Mount Type	Optional	Optional	Rack	Rack	Rack	Rack	Rack
Standard UPS Battery	Optional	Optional	2* VRLA 12V/9AH 16Pcs	2* VRLA 12V/9AH 16Pcs	2* VRLA 12V/9AH 16Pcs	2* VRLA 12V/9AH 40Pcs	<= 4 hour
AC PDU	1* Basic 8 Slots	2* Basic 8 Slots	1* Basic 16 Slots	2* Basic 16 Slots	2* Basic 16 Slots	3* Basic 16 Slots	Per Definition
-48VDC -A	2* 30A	2* 30A	Optional	Optional	Optional	Optional	10 – 600A
Standard 48VDC Battery	Lithium 1* 48V50AH	Lithium 1* 48V50AH	Optional	Optional	Optional	Optional	<= 4 hour
48VDC Power Distribution	BLVD 3* 65A/Terminals	BLVD 3* 65A/Terminals	Optional	Optional	Optional	Optional	Per Definition
<b>Cooling Section</b>							
Cooling Type	Packaged DX	Packaged DX	Split DX	Split DX	Split DX	Split DX	Packaged / Split
Mount Type	Wall	Wall	Rack	Rack	Row	Rack	Wall / Rack / Row
Capacity-kW	1.5	2*1.5	3.9	5.9	7.6	12.8	1.5 - 90.0kW
<b>DCIM Section</b>							
Local Display	Touch Screen	Touch Screen	Touch Screen	Touch Screen	Touch Screen	Touch Screen	Touch Screen
Remote Access	Web Access	Web Access	Web Access	Web Access	Web Access	Web Access	Web Access
Reporting Protocol	Modbus-TCP	Modbus-TCP	Modbus-TCP	Modbus-TCP	Modbus-TCP	Modbus-TCP	Modbus-TCP
UPS Mgmt.	Yes	Yes	Yes	Yes	Yes	Yes	Yes
Cooling Mgmt.	Yes	Yes	Yes	Yes	Yes	Yes	Yes
Temp. & Hum. Sensor	Yes	Yes	Yes	Yes	Yes	Yes	Yes
Fire Sensor	Smoke	Smoke	Smoke	Smoke	Smoke	Smoke	Smoke
Water Sensor	Yes	Yes	Yes	Yes	Yes	Yes	Yes
Door Sensor	Front/Rear	Front/Rear	Front/Rear	Front/Rear	Front/Rear	Front/Rear	Front/Rear
<b>Security Section</b>							
Access Control	RFID/Key	RFID/Key	RFID/Key	RFID/Key	RFID/Key	RFID/Key	RFID/Key
Video Surveillance	Optional	Optional	Optional	Optional	Optional	Optional	Optional
<b>Fire Fighting Section</b>							
Fire Extinguisher	FM200 Rack Module (Opt.)	FM200 Rack Module (Opt.)	FM200 Rack Module (Opt.)	FM200 Rack Module (Opt.)	FM200 Rack Module (Opt.)	FM200 Rack Module (Opt.)	FM200 Rack Module (Opt.)
Early Detection	Vesda (Opt.)	Vesda (Opt.)	Vesda (Opt.)	Vesda (Opt.)	Vesda (Opt.)	Vesda (Opt.)	Vesda (Opt.)

## Notes:

- PDU can be customized with intelligent type and different sockets.
- The water & dust protection level can be customized up to IP66.
- Other configuration is accepted to customize per project requirements.

Efficiency Prefabricated



# Technical Data | US Power – 208-230/3P/50~60Hz

Product Model	ATM-03-H01W	ATM-06-H02W	ATM-06-H01K	ATM-10-H02K	ATM-10-H02R	ATM-20-H03K	Customized
Available Space for IT -U	33U	71U	26U	66U	69U	94U	<= 3 *42U
Available Power for IT -kW	1.3	2.5	3.5	5.0	7.0	12.0	Per Definition
Redundancy	N	N	N	N	N	N	N / N+1 / 2N
Width -mm	905	1810	1400	2000	2600	2600	<= 2600
Depth -mm	1080	1080	1600	1600	1600	1600	1600
Height -mm	2105	2105	2300	2300	2300	2300	2300
Weight -kg	165	345	560	890	1160	1242	Per Definition
IP Level	IP65	IP65	IP65	IP65	IP65	IP65	IP65
Input Power	208-240V/2P/60Hz	208-240V/2P/60Hz	208-240V/2P/60Hz	208-240V/3P/60Hz	200-230V/3P/50-60Hz	200-230V/3P/50-60Hz	Per Definition
Recommended Breaker	32A 1P	63A 1P	63A 1P	63A 3P	63A 3P	63A 3P	Per Definition
<b>Power Section</b>							
UPS -kVA	Optional	Optional	6.0	10.0	10.0	20.0	3 - 200kVA
UPS Mount Type	Optional	Optional	Rack	Rack	Rack	Rack	Rack
Standard UPS Battery	Optional	Optional	2* VRLA 12V/9AH 16Pcs	2* VRLA 12V/9AH 16Pcs	2* VRLA 12V/9AH 16Pcs	4* VRLA 12V/9AH 16Pcs	<= 4 hour
AC PDU	1* Basic 8 Slots	2* Basic 8 Slots	1* Basic 16 Slots	2* Basic 16 Slots	2* Basic 16 Slots	3* Basic 16 Slots	Per Definition
-48VDC -A	2* 30A	3* 30A	Optional	Optional	Optional	Optional	10 - 600A
Standard 48VDC Battery	Lithium 1* 48V50AH	Lithium 1* 48V50AH	Optional	Optional	Optional	Optional	<= 4 hour
48VDC Power Distribution	BLVD 3* 65A/Terminals	BLVD 3* 65A/Terminals	Optional	Optional	Optional	Optional	Per Definition
<b>Cooling Section</b>							
Cooling Type	Packaged DX	Packaged DX	Split DX	Split DX	Split DX	Split DX	Packaged / Split
Mount Type	Wall	Wall	Rack	Rack	Row	Rack	Wall / Rack / Row
Capacity-kW	1.5	2*1.5	3.9	5.9	7.6	12.8	1.5 - 90.0kW
<b>DCIM Section</b>							
Local Display	Touch Screen	Touch Screen	Touch Screen	Touch Screen	Touch Screen	Touch Screen	Touch Screen
Remote Access	Web Access	Web Access	Web Access	Web Access	Web Access	Web Access	Web Access
Reporting Protocol	Modbus-TCP	Modbus-TCP	Modbus-TCP	Modbus-TCP	Modbus-TCP	Modbus-TCP	Modbus-TCP
UPS Mgmt.	Yes	Yes	Yes	Yes	Yes	Yes	Yes
Cooling Mgmt.	Yes	Yes	Yes	Yes	Yes	Yes	Yes
Temp. & Hum. Sensor	Yes	Yes	Yes	Yes	Yes	Yes	Yes
Fire Sensor	Smoke	Smoke	Smoke	Smoke	Smoke	Smoke	Smoke
Water Sensor	Yes	Yes	Yes	Yes	Yes	Yes	Yes
Door Sensor	Front/Rear	Front/Rear	Front/Rear	Front/Rear	Front/Rear	Front/Rear	Front/Rear
<b>Security Section</b>							
Access Control	RFID/Key	RFID/Key	RFID/Key	RFID/Key	RFID/Key	RFID/Key	RFID/Key
Video Surveillance	Optional	Optional	Optional	Optional	Optional	Optional	Optional
<b>Fire Fighting Section</b>							
Fire Extinguisher	FM200 Rack Module (Opt.)	FM200 Rack Module (Opt.)	FM200 Rack Module (Opt.)	FM200 Rack Module (Opt.)	FM200 Rack Module (Opt.)	FM200 Rack Module (Opt.)	FM200 Rack Module (Opt.)
Early Detection	Vesda (Opt.)	Vesda (Opt.)	Vesda (Opt.)	Vesda (Opt.)	Vesda (Opt.)	Vesda (Opt.)	Vesda (Opt.)

## Notes:

- PDU can be customized with intelligent type and different sockets.
- The water & dust protection level can be customized up to IP66.
- Other configuration is accepted to customize per project requirements.

Efficiency Prefabricated



# Our Global Deployments



We believe the world is  
being totally connected.  
The digital connections are  
creating smart intelligence  
and a **better future.**

We design and deliver  
**green efficient** data center  
infrastructure products to  
build foundation of digital  
future.



USA

1450 NE Alex Way APT 299  
Hillsboro, OR 97124, USA  
+1 301 6789 288



CHINA

F101, #06 Yangchong Road,  
Shenzhen, 518018, China  
+86 755 2320 7298

Contact us  
ATTOM TECHNOLOGY



Visit us on web  
<https://www.attom.tech>



Email us  
[support@attom.tech](mailto:support@attom.tech)

