

Summary

- ATS-Automatic Transfer Switch is the upgraded version based on the previous one. It combines the power management technology requirements in data center with development trend of power distribution technology, apply newest hot-swapping technology with complete independent intellectual property right, integrated the network communication, remote management, automatic transfer and power distribution technology into this well-designed automatic transfer switch which can be upgraded from local management level to remote management level.
- The most recent ATS provides reliable and redundant power to connected equipments. The ATS has two input power source, if the primary source shut down, it will seamlessly switch to the secondary power source automatically. ATS has 4 basic models available, if user wants to realize remote management, it requires just a SNMP card to upgrade the basic type to the remote management one.

Classification

Basic ATS: when primary source becomes unavailabel, ATS seamlessly tranfers to secondary source.

Intelligent ATS: inserting a SNMP card into the basic ATS, user can monitor, control and manage the device remotely via network.

Main Functions

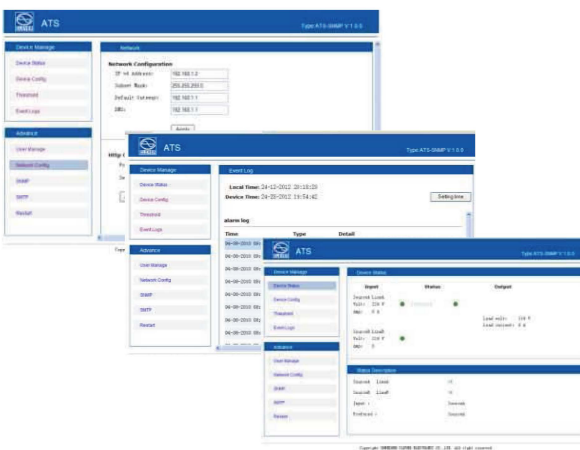
- Seamlessly transfer between source A and B
- Input power monitoring of source A and B
- Input and output voltage monitoring
- Load current monitoring
- Local and remote automatic alarm



Basic ATS



Intelligent ATS (1U)



Intelligent ATS (2U)

Main Functions

Main functions	Performance index	Classification				
		Basic ATS				Intelligent ATS (SNMP card)
		AR128H0812	AR128T0112	AR228H1622	AR128T0122	
Transfer	Transfer polarity	L, N				
	Transfer time	10 ≤ 16ms				
Communication port	Serial port	RJ45×1				
	Network port					RJ45×1
Alarm	Logical port	Φ5 earphone jack 1, to connect audible and visible alarm				
	Remote notification					Email alarm
Display	Output current	LED, 3 digits in red, accuracy 100mA ±1%+1				
	Output voltage	LED, 3 digits in red, accuracy 100mA ±1%+1				
	A/B source indicator	A/B power supply indicator				
	Primary source indicator	A/B power supply indicator				
	Present source indicator	A/B power supply indicator				
	A/B power source	Power supply A/B				Web interface display
Input	Input type	IEC320 C20 socket	IEC60309 16A plug	IEC60309 32A plug		
	Input voltage	180~260VAC 50/60Hz				Web interface display
	Load current	16A		32A		
Output	Output connections	6×IEC320 C13 2×IEC320 C19	IEC60309 16A cable connector	12×IEC320 C13 4×IEC320 C13	IEC60309 32A cable connector	
	Load current	16A		32A		Web interface display
Rack space		1U		2U		
Protection	Overload protector	●				
Dimension L×W×H(mm)		482.6×220×44.4mm		482.6×220×88.8mm		
Environment	Working condition	Temperature: 0~45°C, Humidity: 5~95%				
	Storage condition	Temperature: -5~45°C, Humidity: 5~95%				

ATS Models



AR128H0812



AR128T0112



AR228H1622



AR128T0122