

AgileCub™ Containerized Modular Data Centers

Building foundation of sustainable digital future



Customize for Efficiency

<https://attom.tech>

AgileCub™ Containerized Modular Data Center Solutions

25% less energy consumption, 30% quicker deployment speed

Maximized IT Space

- 8 racks in 20F container, and 18 racks in 40F.
- Wall mount cooling no occupying rack space.
- Sliding racks for easier service operations of IT.
- Hybrid power system with UPS/Power panel/battery in same rack.

Optimized with Energy Efficiency

- Multiple free cooling options including indirect free cooling, or direct air free cooling.
- Cold aisle containment no hot/cold air mix.
- High efficient components including inverter compressors, EC fans and green refrigerant.
- Real time PUE measuring and monitoring.

Integrated for Easy Deployment

- Prefabricated with all components wired installed no need extra onsite works..
- All system tested and commissioned before shipment.
- Wall mount cooling no need piping and gas charging.

Container Construction



- Build from scratch with ISO container standard.
- Thermal protected with rockwool.
- Fire protected options up-to 120min.
- Bullet proof options for high security sites.
- IP55 water/dust protection.

Precision Cooling System



- Standard design with wall mount cooling and optional with row mount/room mount types.
- Work up-to 55C ambient temperature.
- All types of free cooling options.

UPS Power System



- Standard design rack mount type UPS/48VDC rectifier saving space.
- VRLA and Lithium battery by configuration.
- Smart PDU per configurations.
- Built in power distribution panels configurable to T1-T4 uptime level.

IT Rack System



- 1800kg static loading capacity IT racks.
- Optional with cold/hot aisle containment systems.
- Sliding in front/rear direction for easier service.
- Optional with access control for better management.

DCIM System



- Full communication to UPS, cooling, power panel, and all type of sensors.
- Integration with access control system.
- Integration with video surveillance system.
- Local display and settings on touch screen.
- Remote accessible from web, SMS, Email, Modbus-TCP. Optional with SNMP.

Access Control System



- 3 in 1 type (pin/password/fingerprint) access control protection.
- Management by standalone software.
- Integration with DCIM system.

Fire Protection System



- Early fire detection system.
- Smart fire panel for easier fire detection and management.
- Fire agent of Novec1230/FM200.

AgileCub™ Containerized Modular Data Center Solutions

For 10F to dual 40F, all in one solutions with all types of configurations



10F Container Data Center

All in one 10F Container MDC fully integrated with standard rack, wall mount cooling, AC/DC power, battery, power distribution, security, monitoring and fire systems.

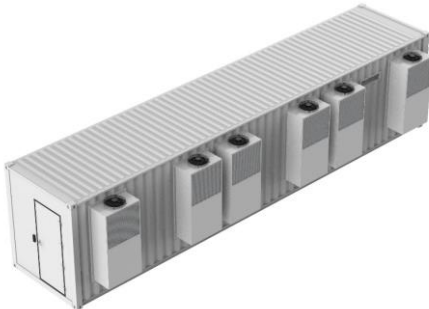
IP55 protection and thermal insulated for outdoor deployment -35C ~ 55C ambient.



20F Container Data Center

All in one 20F Container MDC fully integrated with standard rack, wall mount cooling, AC/DC power, battery, power distribution, security, monitoring and fire systems.

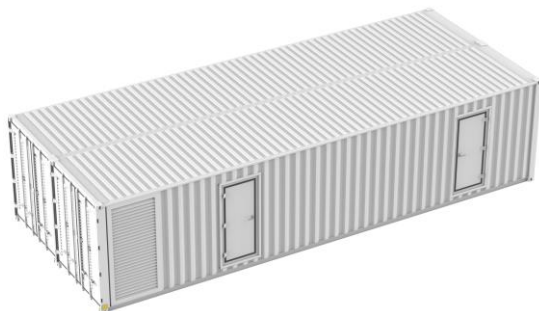
IP55 protection and thermal insulated for outdoor deployment -35C ~ 55C ambient.



40F Container Data Center

All in one 40F Container MDC fully integrated with standard rack, wall mount cooling, AC/DC power, battery, power distribution, security, monitoring and fire systems.

IP55 protection and thermal insulated for global deployment -35C ~ 55C ambient.



Dual Container Data Center

Assembled from 2 or more containers, integrated with standard rack, row mount cooling, AC/DC power, battery, power distribution, security, monitoring and fire systems.

IP55 protection and thermal insulated for global deployment -35C ~ 55C ambient.

Technical Data | IEC Power

Product Model	ATM-10-C03	ATM-20-C03	ATM-30-C08	ATM-60-C08	ATM-80C18	ATM-140-C18	ATM-160-C36	ATM-320-C36	Customized
IT Rack No.	2	2	6	6	16	14	32	30	Per Definition
Power Density -kW/Rack	5.0	10.0	5.0	10.0	5.0	10.0	5.0	10.0	Per Definition
Redundancy	N+1	N+1	N+1	N+1	N+1	N+1	N+1	N+1	N/N+1/2N
Width -mm	2438	2438	2438	2438	2438	2438	4876	4876	Per Definition
Depth -mm	2991	2991	6058	6058	12192	12192	12192	12192	Per Definition
Height -mm	2896	2896	2896	2896	2896	2896	2896	2896	Per Definition
Weight -kg	4170	4400	8135	8755	16475	17845	32380	36000	Per Definition
IP Level	IP55	IP55	IP55	IP55	IP55	IP55	IP55	IP55	IP55
Input Power	380-415V/3P /50-60Hz	380-415V/3P /50-60Hz	380-415V/3P /50-60Hz	380-415V/3P /50-60Hz	380-415V/3P /50-60Hz	380-415V/3P /50-60Hz	380-415V/3P /50-60Hz	380-415V/3P /50-60Hz	Per Definition
Power Section									
UPS -kVA	2* 10	3* 10	3* 15	5* 15	5* 25	7* 25	8* 25	7* 50	3 – 500kVA
UPS Mount Type	Rack	Rack	Rack-Modular	Rack-Modular	Rack-Modular	Rack-Modular	Rack-Modular	Floor-Modular	Rack/Floor
Standard UPS Battery	15min@10kW	15min@20kW	15min@30kW	15min@60kW	15min@80kW	15min@140kW	15min@160kW	15min@300kW	<= 4 hour
AC PDU Smart/Basic PDU Smart/Basic PDU Smart/Basic PDU Smart/Basic PDU Smart/Basic PDU Smart/Basic PDU Smart/Basic PDU	Optional	Optional	Optional	Optional	Optional	Optional	Optional	Optional	Per Definition
-48VDC -A	Optional	Optional	Optional	Optional	Optional	Optional	Optional	Optional	10 – 600A
Standard 48VDC Battery	Optional	Optional	Optional	Optional	Optional	Optional	Optional	Optional	<= 4 hour
48VDC Power Distribution	Optional	Optional	Optional	Optional	Optional	Optional	Optional	Optional	Per Definition
Cooling Section									
Cooling Type	Packaged DX	Packaged DX	Packaged DX	Packaged DX	Packaged DX	Packaged DX	Packaged DX	Packaged DX	Packaged/Split
Mount Type	Wall	Wall	Wall	Wall	Wall	Wall	Wall	Wall	Row/Room/Wall
Capacity-kW	2* 12.5	2* 21.2	3* 17.5	4* 21.2	5* 21.2	8* 21.2	10* 21.2	18* 21.2	1.5 – 200.0kW
DCIM Section									
Local Display	Touch Screen	Touch Screen	Touch Screen	Touch Screen	Touch Screen	Touch Screen	Touch Screen	Touch Screen	Touch Screen
Remote Access	Web Access	Web Access	Web Access	Web Access	Web Access	Web Access	Web Access	Web Access	Web Access
Reporting Protocol	Modbus/SNMP	Modbus/SNMP	Modbus/SNMP	Modbus/SNMP	Modbus/SNMP	Modbus/SNMP	Modbus/SNMP	Modbus/SNMP	Modbus/SNMP
UPS Mgmt.	Yes	Yes	Yes	Yes	Yes	Yes	Yes	Yes	Yes
Cooling Mgmt.	Yes	Yes	Yes	Yes	Yes	Yes	Yes	Yes	Yes
Temperature Humidity Sensor	Yes	Yes	Yes	Yes	Yes	Yes	Yes	Yes	Yes
Fire Sensor	Smoke	Smoke	Smoke	Smoke	Smoke	Smoke	Smoke	Smoke	Smoke
Water Sensor	Yes	Yes	Yes	Yes	Yes	Yes	Yes	Yes	Yes
Door Sensor	Yes	Yes	Yes	Yes	Yes	Yes	Yes	Yes	Yes
Security Section									
Access Control	RFID/Pin/Finger	RFID/Pin/Finger	RFID/Pin/Finger	RFID/Pin/Finger	RFID/Pin/Finger	RFID/Pin/Finger	RFID/Pin/Finger	RFID/Pin/Finger	RFID/Pin/Finger
Video Surveillance	Yes	Yes	Yes	Yes	Yes	Yes	Yes	Yes	Yes
Fire Fighting Section									
Fire Extinguisher	FM200 / Novec1230	FM200 / Novec1230	FM200 / Novec1230	FM200 / Novec1230	FM200 / Novec1230	FM200 / Novec1230	FM200 / Novec1230	FM200 / Novec1230	FM200 / Novec1230
Early Detection	VESDA	VESDA	VESDA	VESDA	VESDA	VESDA	VESDA	VESDA	VESDA

Customize for Efficiency



Technical Data | US Power

Product Model	ATM-10-C03	ATM-20-C03	ATM-30-C08	ATM-60-C08	ATM-80C18	ATM-140-C18	ATM-160-C36	ATM-320-C36	Customized
IT Rack No.	2	2	6	6	16	14	32	30	Per Definition
Power Density -kW/Rack	5.0	10.0	5.0	10.0	5.0	9.0	5.0	9.0	Per Definition
Redundancy	N+1	N+1	N+1	N+1	N+1	N+1	N+1	N+1	N/N+1/2N
Width -mm	2438	2438	2438	2438	2438	2438	4876	4876	Per Definition
Depth -mm	2991	2991	6058	6058	12192	12192	12192	12192	Per Definition
Height -mm	2896	2896	2896	2896	2896	2896	2896	2896	Per Definition
Weight -kg	4170	4400	8135	8755	16475	17845	32380	36000	Per Definition
IP Level	IP55	IP55	IP55	IP55	IP55	IP55	IP55	IP55	IP55
Input Power	200-230V/3P /50-60Hz	200-230V/3P /50-60Hz	200-230V/3P /50-60Hz	200-230V/3P /50-60Hz	200-230V/3P /50-60Hz	200-230V/3P /50-60Hz	200-230V/3P /50-60Hz	200-230V/3P /50-60Hz	Per Definition
Power Section									
UPS -kVA	2* 10	3* 10	4* 10	5* 15	7* 15	10* 15	14* 15	20* 15	3 – 500kVA
UPS Mount Type	Rack	Rack	Rack-Modular	Floor-Modular	Floor-Modular	Floor-Modular	Floor-Modular	Floor-Modular	Rack/Floor
Standard UPS Battery	15min@10kW	15min@20kW	15min@30kW	15min@60kW	15min@80kW	15min@126kW	15min@160kW	15min@270kW	<= 4 hour
AC PDU Smart/Basic PDU Smart/Basic PDU Smart/Basic PDU Smart/Basic PDU Smart/Basic PDU Smart/Basic PDU Smart/Basic PDU Smart/Basic PDU	Per Definition	Per Definition	Per Definition	Per Definition	Per Definition	Per Definition	Per Definition	Per Definition	Per Definition
-48VDC -A	Optional	Optional	Optional	Optional	Optional	Optional	Optional	Optional	10 – 600A
Standard 48VDC Battery	Optional	Optional	Optional	Optional	Optional	Optional	Optional	Optional	<= 4 hour
48VDC Power Distribution	Optional	Optional	Optional	Optional	Optional	Optional	Optional	Optional	Per Definition
Cooling Section									
Cooling Type	Packaged DX	Packaged DX	Packaged DX	Packaged DX	Packaged DX	Packaged DX	Packaged DX	Packaged DX	Packaged/Split
Mount Type	Wall	Wall	Wall	Wall	Wall	Wall	Wall	Wall	Row/Room/Wall
Capacity-kW	2* 12.5	2* 21.2	3* 17.5	4* 21.2	5* 21.2	8* 21.2	10* 21.2	18* 21.2	1.5 – 200.0kW
DCIM Section									
Local Display	Touch Screen	Touch Screen	Touch Screen	Touch Screen	Touch Screen	Touch Screen	Touch Screen	Touch Screen	Touch Screen
Remote Access	Web Access	Web Access	Web Access	Web Access	Web Access	Web Access	Web Access	Web Access	Web Access
Reporting Protocol	Modbus/SNMP	Modbus/SNMP	Modbus/SNMP	Modbus/SNMP	Modbus/SNMP	Modbus/SNMP	Modbus/SNMP	Modbus/SNMP	Modbus/SNMP
UPS Mgmt.	Yes	Yes	Yes	Yes	Yes	Yes	Yes	Yes	Yes
Cooling Mgmt.	Yes	Yes	Yes	Yes	Yes	Yes	Yes	Yes	Yes
Temperature Humidity Sensor	Yes	Yes	Yes	Yes	Yes	Yes	Yes	Yes	Yes
Fire Sensor	Smoke	Smoke	Smoke	Smoke	Smoke	Smoke	Smoke	Smoke	Smoke
Water Sensor	Yes	Yes	Yes	Yes	Yes	Yes	Yes	Yes	Yes
Door Sensor	Yes	Yes	Yes	Yes	Yes	Yes	Yes	Yes	Yes
Security Section									
Access Control	RFID/Pin/Finger	RFID/Pin/Finger	RFID/Pin/Finger	RFID/Pin/Finger	RFID/Pin/Finger	RFID/Pin/Finger	RFID/Pin/Finger	RFID/Pin/Finger	RFID/Pin/Finger
Video Surveillance	Yes	Yes	Yes	Yes	Yes	Yes	Yes	Yes	Yes
Fire Fighting Section									
Fire Extinguisher	FM200 / Novec1230	FM200 / Novec1230	FM200 / Novec1230	FM200 / Novec1230	FM200 / Novec1230	FM200 / Novec1230	FM200 / Novec1230	FM200 / Novec1230	FM200 / Novec1230
Early Detection	VESDA	VESDA	VESDA	VESDA	VESDA	VESDA	VESDA	VESDA	VESDA

Customize for Efficiency



Our Customer Success

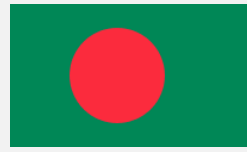
We always think in user perspective to support our customers success. We build our long term success with the values of customer first.



Customize for Efficiency



Our Global Deployments



Customize for Efficiency



We believe the world is
being totally connected.

The connections are
creating digital intelligence
and a better future.

We design and deliver
data center
infrastructure products
to build foundation of
digital future.



USA
1450 NE Alex Way APT 299
Hillsboro, OR 97124, USA
+1 301 6789 288



CHINA
F101, #06 Yangchong Road,
Shenzhen, 518018, China
+86 755 2320 7298

Contact us

ATTOM TECHNOLOGY

Visit us on web
<https://www.atom.tech>

Email us
support@attom.tech

