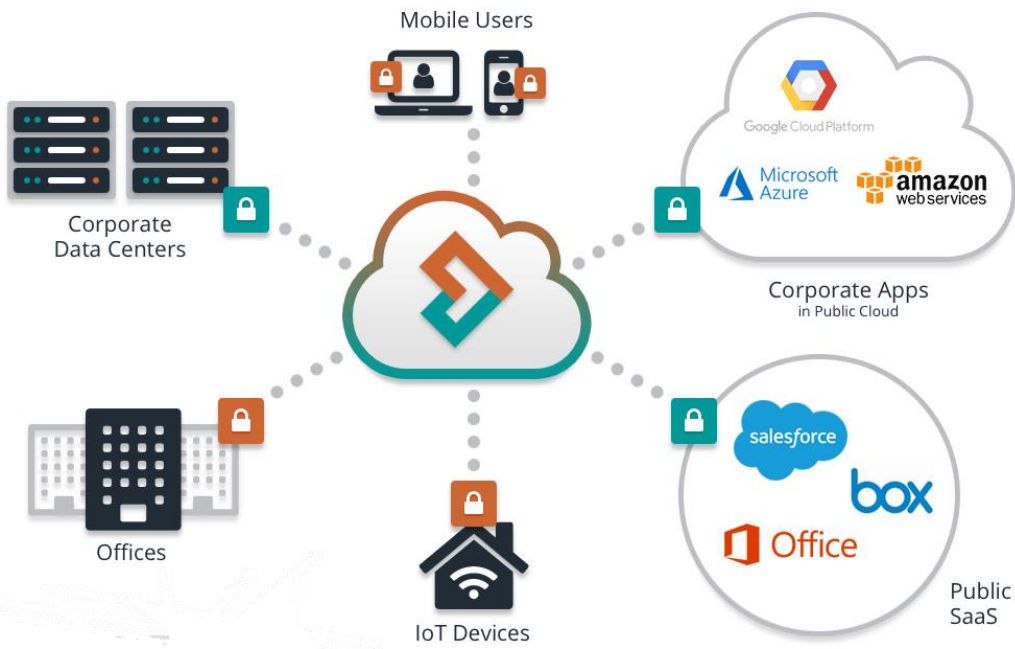
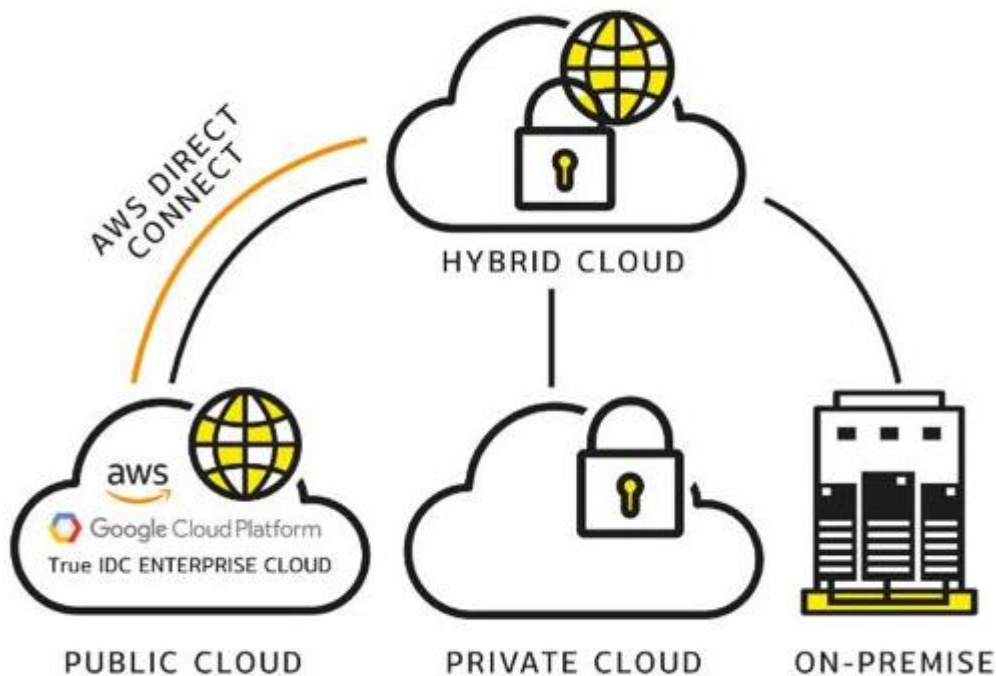


# Micro Data Center – The Future Ready Choice for Modern Enterprise IT



## Moving Cloud vs Moving Edge

Over the last several years, the move to the cloud has stabilized as the applications that could be easily and cost effectively outsourced, were moved to the cloud. The applications left on premise are simply too integrated into local operations or too expensive to move. This forced a change to the way data center staffs manage their assets with some assets outsourced and others still 'on premise / at the edge'.



Exponential growth in data has created a new level of demand on data centers. The need for localized content delivery and data analytics means enterprises may need to provide increased and timely compute resource both onsite and at distributed locations.

It'll be important to understand where these types of solution can impact your business and where you should be deploying. There will be micro-data centers, because they will reflect the success of every company.

## Micro Modular Data Center

Micro Data Center, a self-contained converged IT and facilities solution that incorporates compute, network, storage, power, cooling, security and unified management control, has become an answer to this challenge in that they are easily installed, self-contained, scalable and remotely managed, to provide customers a ideal solution for distributed local IT and edge computing applications.



### Easy Deployment

Pre-manufactured and fully tested means that no on-site engineering needed to activate the product. Within one day, you can deploy the IT equipments and quickly power on your business.

### Easy Management

Design once and deploy anywhere. By this standardized architecture and remote monitoring access platform, you can gain control of these critical assets, reduce risks and operational costs, and improving service levels.

### Easy Expansion

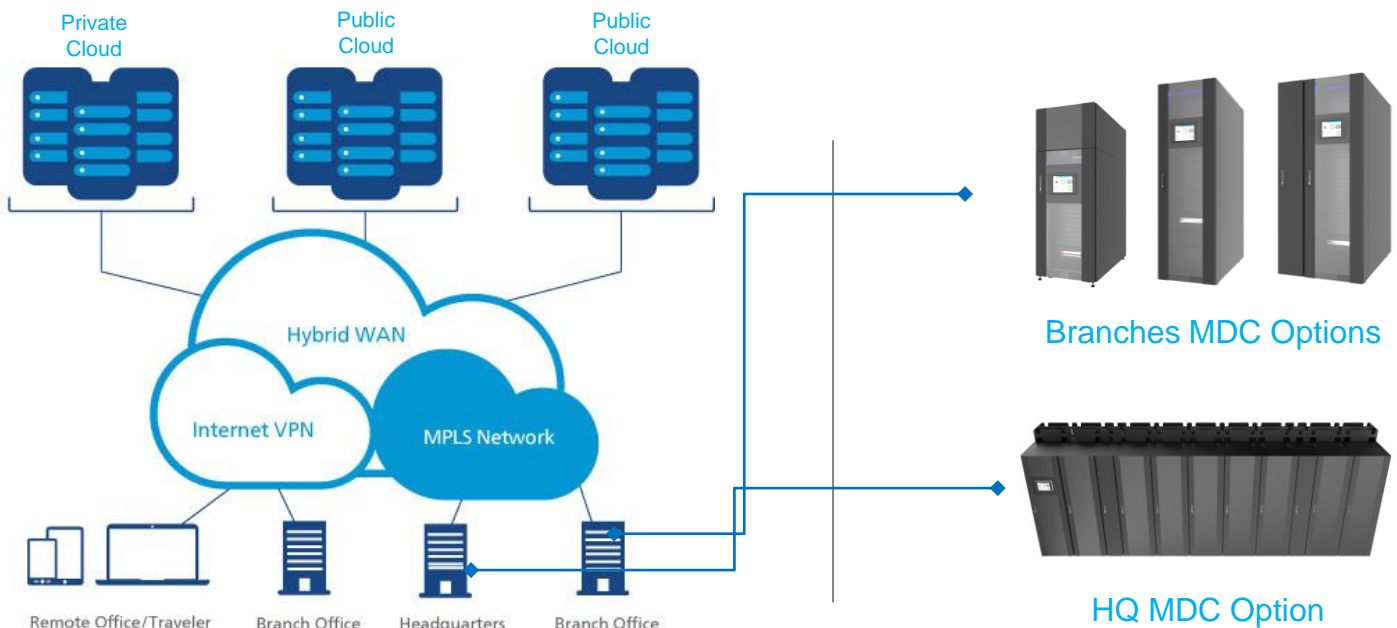
A stand alone full function solution. You can plan and invest your IT assets step by step while your business grows. Buy small and scale to big. Invest only when necessary.

Micro Data Centers are the turnkey solution for enterprise and SMB clients. Small enough to deploy anywhere, sturdy enough to support enterprise-class racks gear independent of building cooling with integrated power, cooling, security and access control. The standardized modules make it flexible to integrate and pre-test everything in a factory environment, forming from half cabinet to multiple cabinets, and quickly delivered with the all-in-one portability.

**Would you like to move everything to the cloud but still keep some equipment on-hand for security, backup or latency reasons?**

## Use Case 1 – Enterprise IT vs Hybrid Cloud

The new “hybrid” data centers architecture can consist of a combination of – a centralized cloud characterized by massive compute and storage, regional edge data centers that consist of compute and storage located closer to the user, and local edge with smaller compute and storage assets very near to where the data is being consumed like a branch office or retail store.



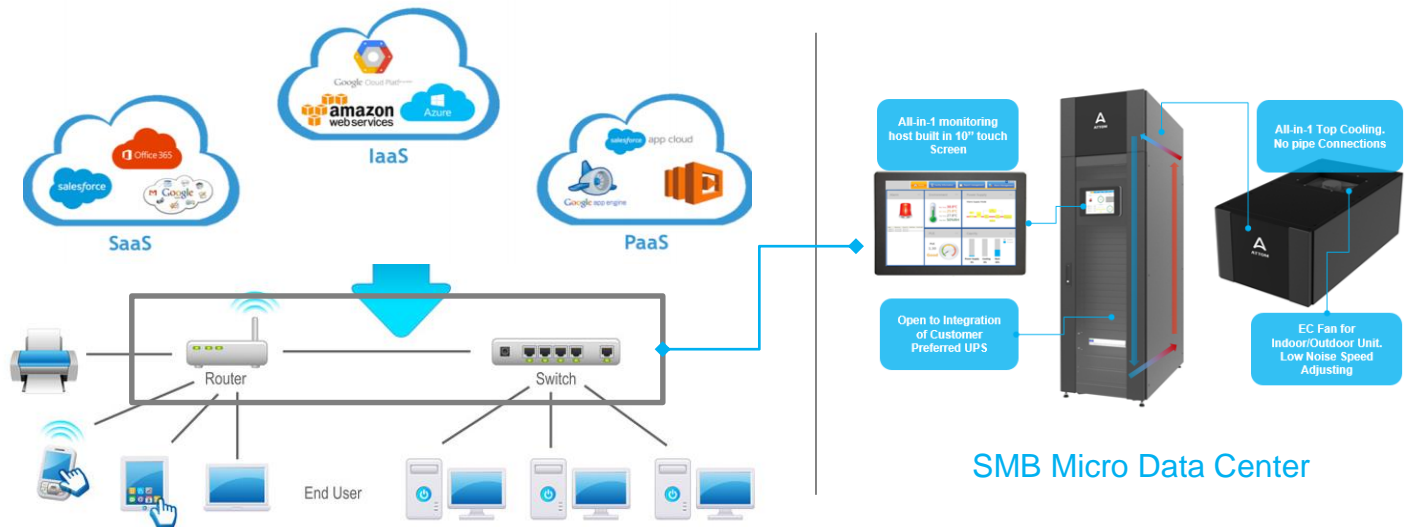
The Micro Data Center solution which comes with standardized-modularity, full-integration, and easy-expansion characteristics, really simplify the Enterprise IT system, by maximizing the cloud data center’s efficiency and flexibility, while still keeping on-premise assets on hand, to ensure good connectivity, better the local user experience, and protect sensitive data privacy.

### The key benefits of Micro Data Center for Enterprise IT

- **Saving time. Plug and play with the fully integrated and pre-tested solution.**
- **Saving cost. Shrink data center to self-contained racks so less dedicated resources needed for the simplified modules.**
- **Improving performance and security level. Pre-engineered with design options of reliability, efficiency and security.**
- **Easy duplication and management. The standard architecture and built in monitoring access make it easy to duplicate and manage your critical assets across the multiple branches.**

## Use Case 2 - SMB IT vs Cloud Computing

Most SMBs that are integrating more cloud into their IT system. Increasingly, SMBs need cost-effective, agile and scalable solutions that help to ameliorate IT risks and headaches for a small staff.



With the right selection of Micro Data Center solution at local site, you can utilize the cost effective cloud solutions, and protect your business with the network connectivity, local backup, and local sensitive data. Now bring a self-contained micro data center into your office.

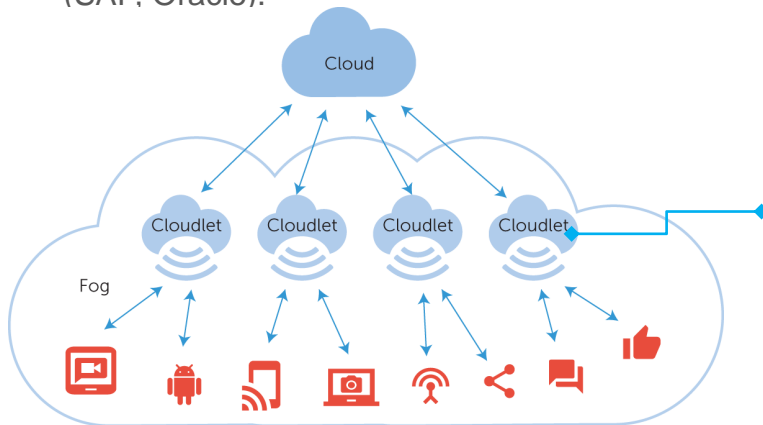
### The key benefits of Micro Data Center for SMB IT

- **Saving cost.** Less dedicated resources(room space, people, electricity power) needed for the simplified solution.
- **Reducing complexity.** The portable solution with packaged cooling and all the necessary power, battery, and monitoring is easy to install and easy to use.
- **Improving performance and security level.** Pre-engineered with design of reliability, efficiency and security firmly protects the local IT assets.
- **Saving time.** Plug and play with the fully integrated and pre-tested solution.

## Use Case 3 – IoT Clouplet vs Public Cloud

More and more companies realize they have to equip their machines and plants with intelligence to capture the value of their industrial data. This requires running enterprise-grade IT systems at close range to the operational technology equipment, creating actionable insights and automatic action in real time, plus the central cloud platform either private or public for data storage and analysis. The major cloud service providers all have the cloudlet computing offerings:

- Microsoft Azure IoT Edge, acts as an extension of the Azure cloud environment to the edge.
- Amazon AWS Lambda@Edge executes user code at AWS locations around the world, closer to the end user, and Amazon CloudFront is its global content delivery network.
- Google IoT Edge, intends to bring data processing and machine learning to edge devices that can run Android Things or a Linux-based operating system. Google is going further into edge computing with its Edge TPU hardware to support AI at the edge.
- And many edge-related products emerging from other vendors including networking companies (e.g., Cisco, AT&T), industrial automation companies (Siemens, GE) and software vendors (SAP, Oracle).



Cloudlet Micro Data Center

Micro Data Centers are the heart and soul of an effective cloudlet IT strategy, combining existing cloud deployments with ready-made resources like compute, development, networking, storage, content delivery, some artificial intelligence, data analytics and other applications offered today.

### The key benefits of Micro Data Center for Cloudlet

- **Saving time** – delivered as a factory-integrated and tested turnkey solution, fully equipped with pre-configured infrastructure, the Micro Data Center is ready to operate within 1 week.
- **Secure digital processes** – A solution protecting against humidity, dust and dirt, with integrated cooling, fire suppression and redundant power supply with backup battery.
- **Digitize industrial environments** - Cost-efficiently and with economic flexibility by providing enterprise data center functionality on the footprint of standard IT rack.
- **Avoid downtime and on-site operations effort** – Micro Data Center and its infrastructure can be remotely monitored and managed across customer locations to ensure high availability without requiring specialized staff on site.



# Attom Micro Data Center Solution

Attom Technology is dedicated to design and deliver the Micro Modular Data Center Product Platform, with the leading Flexible and Versatile options, to simplify Edge Data Centers deployment and management.



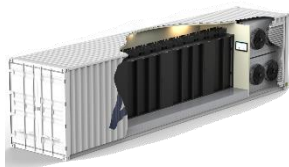
Indoor  
Cabinet  
Type



Indoor  
Row  
Type



Outdoor  
Cabinet  
Type



Outdoor  
Container  
Type

- Enterprise/Cloudlet/On-premise infrastructure
- Remote/Branch office environments
- Smart Retail
- Finance & banking sector
- Warehouse/Logistics Hubs
- Oil/Gas/Mining
- National and Local Government
- Small and medium enterprises
- Network rooms
- Office communication rooms
- Smart manufacturing
- Process automation in harsh environments
- Military
- Government/Education
- IAAS (Infrastructure as a service) component

**Attom Technology**

Address: No. 04 Yangchong Road, Baoan District, Shenzhen, China 

Telephone: +86 755 2320 7291 

Web: <http://www.attom.tech> 